

In This Issue

ALSI decreases by 274.9 basis Points
SBU Most Active

Popular links

<http://use.or.ug>
<http://scd.use.or.ug>

Contact Us

trading@use.or.ug
+256 417 705 500

BATU	30000
BOBU	155
CENT	1474
DFCU	939
EABL	9210
EBL	1314
JHL	15405
KA	149
KCB	1323
NIC	11
NMG	5928
NVL	605
SBU	31
UCHM	224
UCL	15
UMEM	570

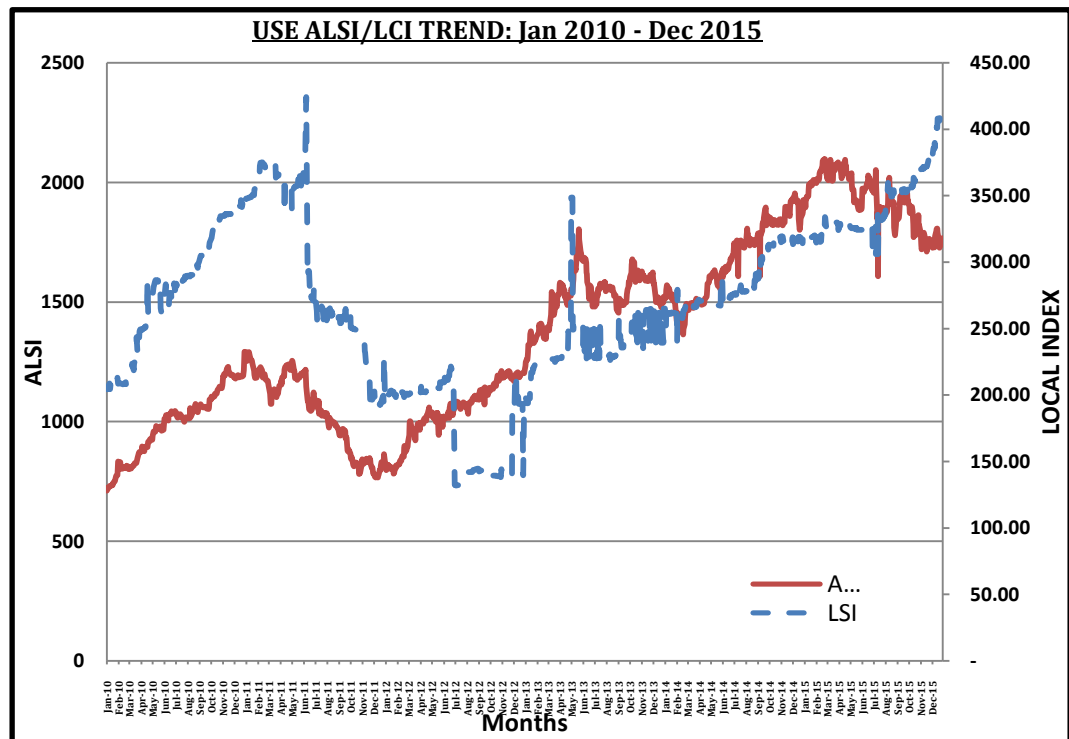
22nd – 26th February 2016

The week's session closed with the ALSI Index at 1753.5 down by 274.9 basis points while the LSI closed at 425.35 down by 26.5 basis points. 2 Stocks advanced while 9 stocks declined; an advance to decline ratio of 2:9, 5 stocks remained flat during the session.

The most active counters by volume were UMEME and SBU. The counters that had the largest advances were CENT and KA. The largest decliners were UCL and EABL.

The turnover during this period stood at 485,762,338 greater than 17,676,434 that was recorded the previous week. The number of shares traded stood at 2,739,682 greater than 320,955 that were traded the previous week.

ALSI & LSI Index Graphs



Source: USE product markets |ALSI All share Index |LSI Local share Index