

In This Issue

ALSI increased by
65.08 basis Points
UMEME Most Active

Popular links

<http://use.or.ug>
<http://scd.use.or.ug>

Contact Us

trading@use.or.ug

+256 312370815

BATU **30000**

BOBU **109**

CENT **1444**

DFCU **759**

EABL **9339**

EBL **1392**

JHL **10308**

KA **139**

KCB **1409**

NIC 12

NMG **3792**

NVL **539**

SBU 27

UCHM **118**

UCL 13

UMEM **425**

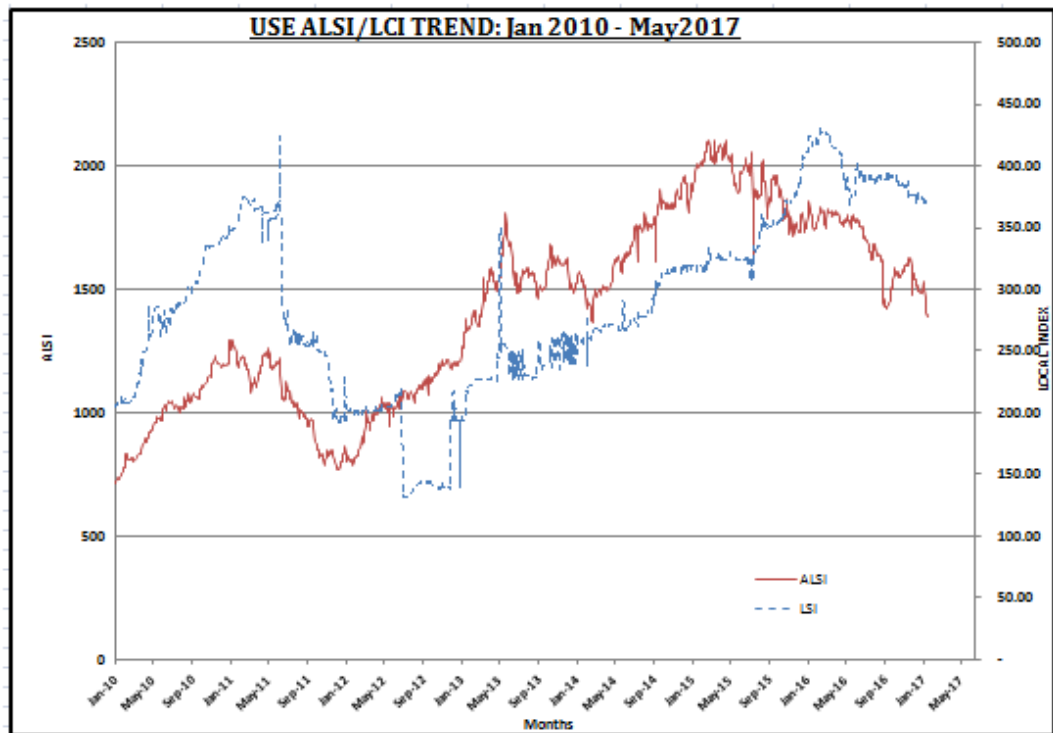
31st July – 04th August 2017

The week's session closed with the ALSI Index at 1746.13 up by 65.08 basis points while the LSI closed at 371.87 up by 54.62 basis points. 6 stocks advanced while 5 stocks declined; an advance to decline ratio of 6:5; 5 stocks remained flat during the session.

The most active counters by volume were SBU and UMEME. The counters that had the largest advances were CENT and JHL. The largest decliners were UCHM and KA.

The turnover during this period stood at 2,354,953,592 greater than 1,174,768,539 that was recorded the previous week. The number of shares traded stood at 6,946,121 greater than 5,264,462 that were traded the previous week.

ALSI & LSI Index Graphs



Source: USE product markets |ALSI All share Index |LSI Local share Index