



August 11 2017

Week 32 of 52

In This Issue

ALSI increased by
163.5 basis Points
UMEME Most Active

Popular links

<http://use.or.ug>
<http://scd.use.or.ug>

Contact Us

trading@use.or.ug

+256 312370815

BATU **30000**

BOBU **106**

CENT **1485**

DFCU **758**

EABL 9276

EBL **1434**

JHL **10085**

KA **158**

KCB **1477**

NIC 12

NMG **3960**

NVL **539**

SBU 27

UCHM **137**

UCL **14**

UMEM **426**

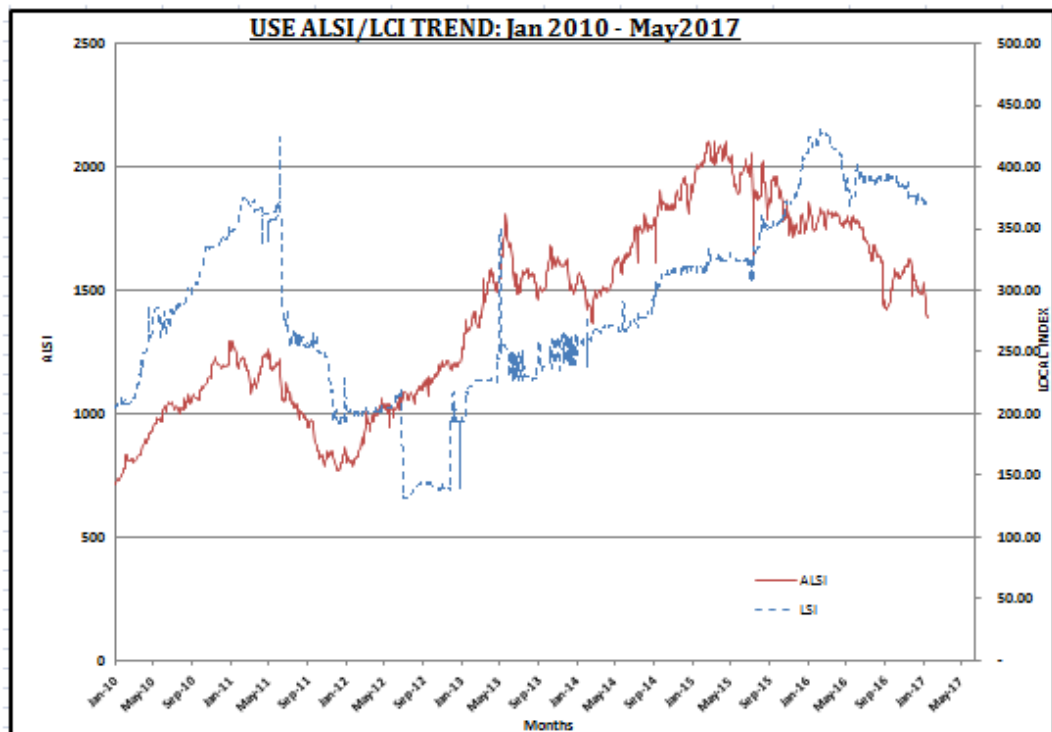
7th- 11th August 2017

The week's session closed with the ALSI Index at 1774.68 up by 163.5 basis points while the LSI closed at 371.38 up by 13.18 basis points. 9 stocks advanced while 3 stocks declined; an advance to decline ratio of 9:3; 4 stocks remained flat during the session.

The most active counters by volume were SBU and UMEME. The counters that had the largest advances were UCHM and KA. The largest decliners were BOBU and EABL.

The turnover during this period stood at 4,138,328,747 greater than 2,354,953,592 that was recorded the previous week. The number of shares traded stood at 12,796,861 greater than 6,946,121 that were traded the previous week.

ALSI & LSI Index Graphs



Source: USE product markets |ALSI All share Index |LSI Local share Index