

## In This Issue

ALSI increases by  
219.76 basis Points  
UMEME Most Active

## Popular links

<http://use.or.ug>  
<http://scd.use.or.ug>

## Contact Us

[trading@use.or.ug](mailto:trading@use.or.ug)  
+256 417 705 500

BATU	30000
BOBU	155
CENT	1511
DFCU	950
EABL	9543
EBL	1367
JHL	10087
KA	151
KCB	1341
NIC	11
NMG	6113
NVL	606
SBU	31
UCHM	243
UCL	16
UMEM	570

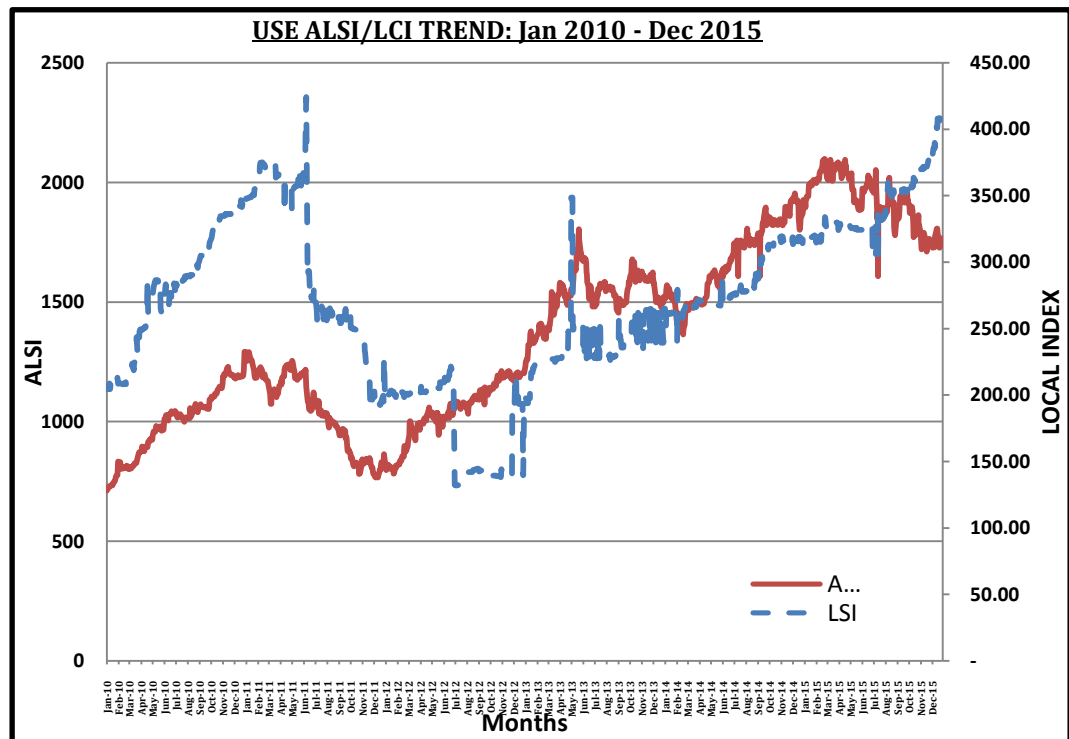
## 08th – 12th February 2016

The week's session closed with the ALSI Index at 1824.83 up by 219.76 basis points while the LSI closed at 427.89 up by 254.02 basis points. 7 Stocks advanced while 5 stocks declined; an advance to decline ratio of 7:5, 4 stocks remained flat during the session.

The most active counters by volume were UMEME and BATU. The counters that had the largest advances were BATU, UCL and EBL. The largest decliners were UMEME, UCHM and CENT.

The turnover during this period stood at 14,790,930,393 greater than 3,397,322,710 that was recorded the previous week. The number of shares traded stood at 20,484,355 less than 26,967,742 that were traded the previous week.

## ALSI & LSI Index Graphs



Source: USE product markets |ALSI All share Index |LSI Local share Index